

EDU-220: Palo Alto Networks: Panorama 10.0: Managing Firewalls at Scale

EDU-220: Palo Alto Networks: Panorama 10.0: Managing Firewalls at Scale

About this Course:

- The Palo Alto Networks Panorama 10.0: Managing Firewalls at Scale (EDU-220) course is two days of instructor-led training that will help you:
 - Learn how to configure and manage the next-generation Panorama™ management server
 - Gain experience configuring templates (including template variables) and device groups
 - Gain experience with administration, log collection, and logging and reporting
 - Become familiar with planning and design considerations for Panorama deployment
-

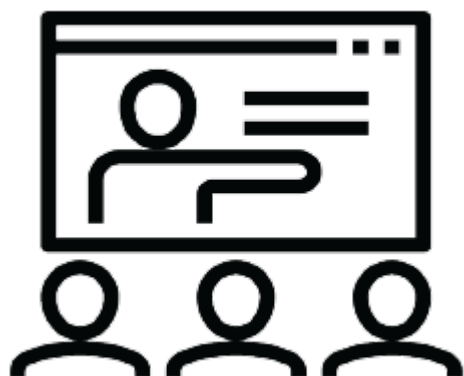
Course Goals/Skills:

- Module 1 : Initial Configuration
 - Module 2 : Adding Firewalls
 - Module 3 : Templates
 - Module 4 : Device Groups
 - Module 5 : Administrative Accounts
 - Module 6 : Log Forwarding and Collection
 - Module 7 : Aggregated Monitoring and Reporting
 - Module 8 : Troubleshooting
-

Audience:

- Security Engineers, Security Administrators, Security Operations Specialists, Security Analysts, Network Engineers and Support Staff.
-

Course Format:



Присъствен (Classroom)
Курс в Учебната ни зала
или В Офис на Клиент



Онлайн (Online/Virtual)
Курс във виртуална зала
с инструктор

Course Language Option



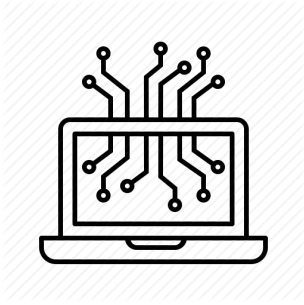
Български (Bulgarian)



Английски (English)

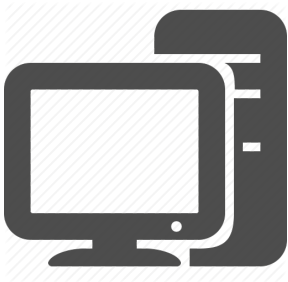
You can choose the language in which the training will be conducted – Bulgarian or English. All our instructors are fluent in English.

Student Guides:



The training materials are available in electronic format. They can be used online / offline on any device. Lifetime access.

Lab Environment:





Each student has their own lab environment where the exercises are conducted, part of the course.

You do not need to install software on a computer or special hardware requirements.

Participants in a face-to-face format in our Training Center have an individual computer during the training.

At Course

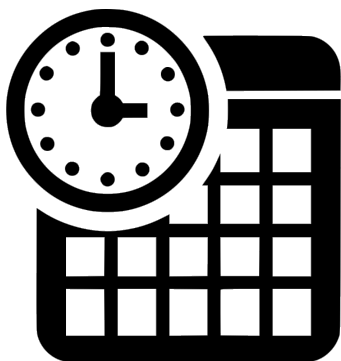
Completion:

	
Lifetime Access - Video Archive 24/7	Certificate of Course Completion

Lifetime access to a video archive with recording of each individual lecture.

Official internationally recognized certificate for completed training course.

Course Duration:



- 2 working days (09:00 – 17:00)
 - or 16 h training (theory and practice) in non-working hours lasting 1 week
 - Saturday and Sunday 10:00 – 14:00, 14:00 – 18:00, 18:00 – 22:00
 - Monday and Wednesday 19:00 – 23:00
 - Tuesday and Thursday 19:00 – 23:00
-

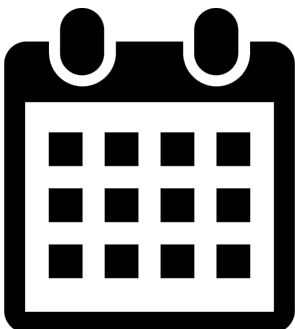
Payments:



An application for an invoice is accepted at the time of enrollment in the respective course.

An invoice is issued within 7 days of confirming the payment.

Next Class:





- There are no upcoming events.

For more information, use the contact form.

We will contact you to confirm the dates.

Prerequisites:

- Familiar with basic networking concepts including routing, switching, and IP addressing.
 - Familiar with basic security concepts. Experience with other security technologies (IPS, proxy, and content filtering) is a plus.
-

The course prepares for the following certification levels

- **PCNSE** – Palo Alto Networks Certified Network Security Engineer